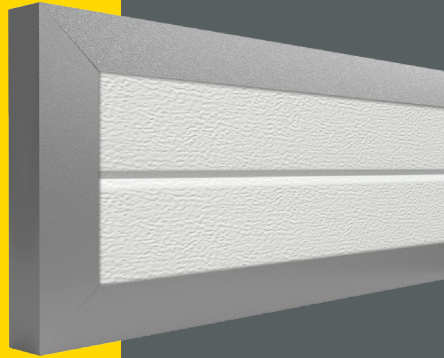


**02**  
PAGE

**TOP SEAL  
OPTIONS**



**03**  
PAGE

**FASCIA  
PANEL**



**04**  
PAGE

**ALU LINTEL  
PROFILE**

**FULL ALU  
FRAME**

**PVC LINTEL  
PROFILE**

**ALUMINIUM EXTENSION  
PROFILE**

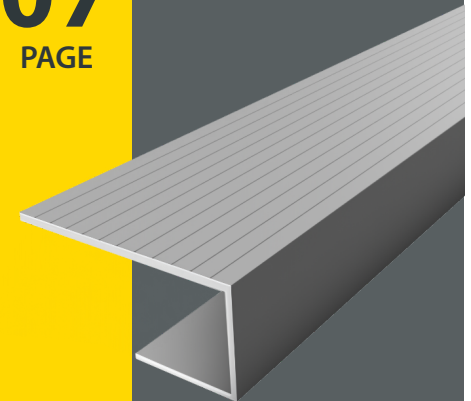
**05**  
PAGE



**06**  
PAGE



**07**  
PAGE

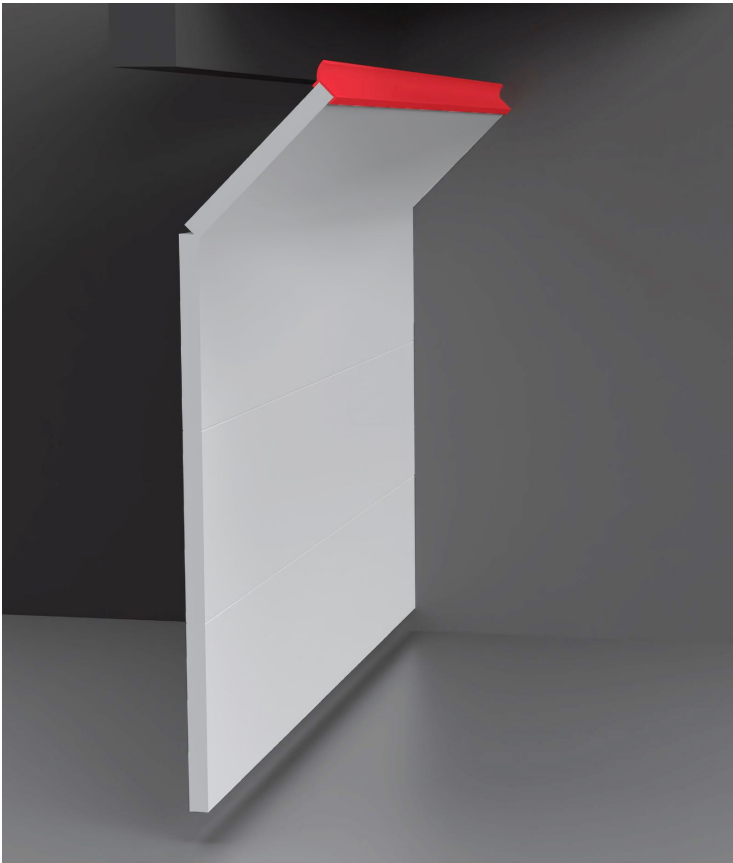
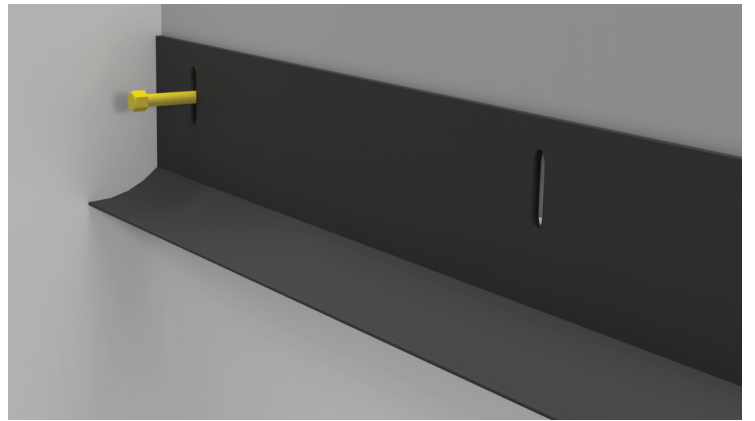
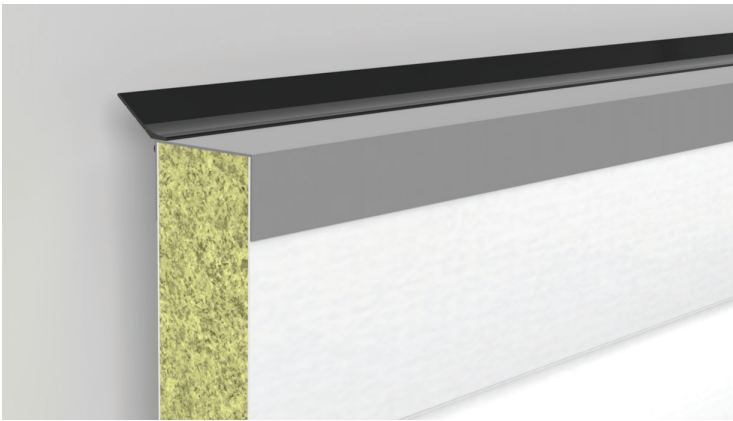
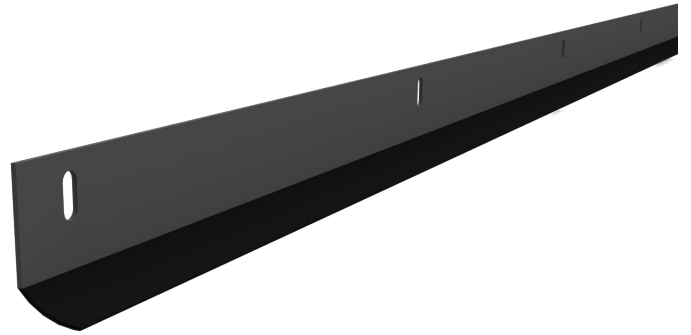


# TOP SEAL OPTIONS

Top Seal on the top panel

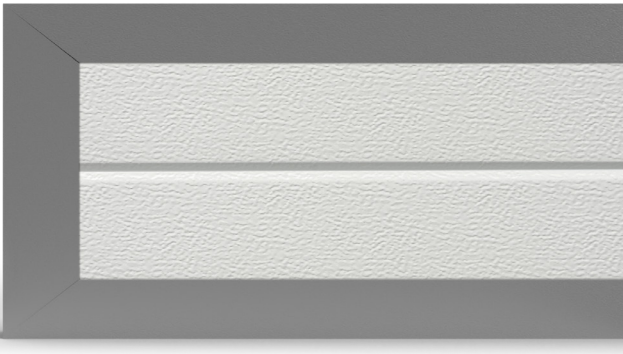


Top Seal on the lintel

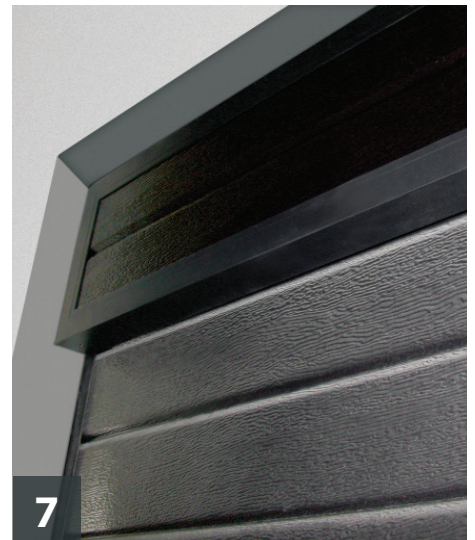
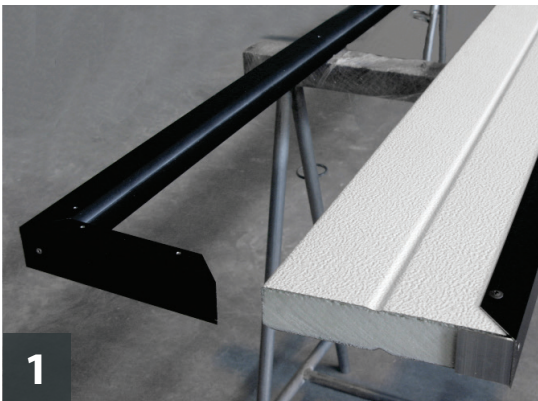


Using top weatherseal on lintel can save you up to 30 mm of required min lintel height.

# FASCIA PANEL



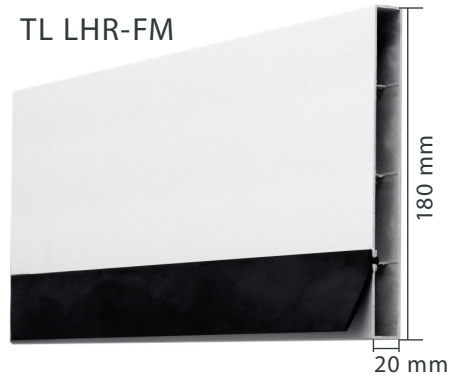
Made of the same panels as garage door and framed with matching colour U-shape aluminium profiles.



# ALU LINTEL PROFILE



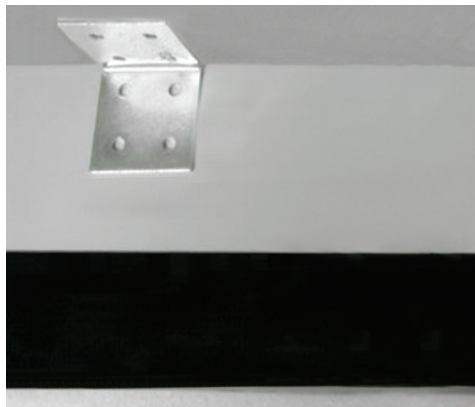
TL LHR-FM



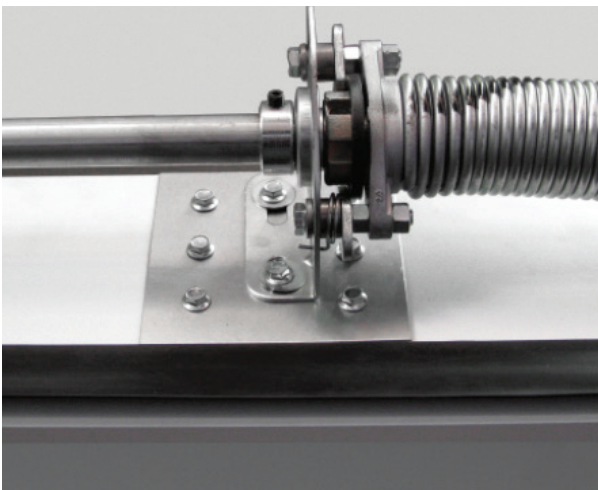
R40/R30/TL LHR-RM



## ALU Lintel profile mounting brackets



## Reinforcement plate for springs included

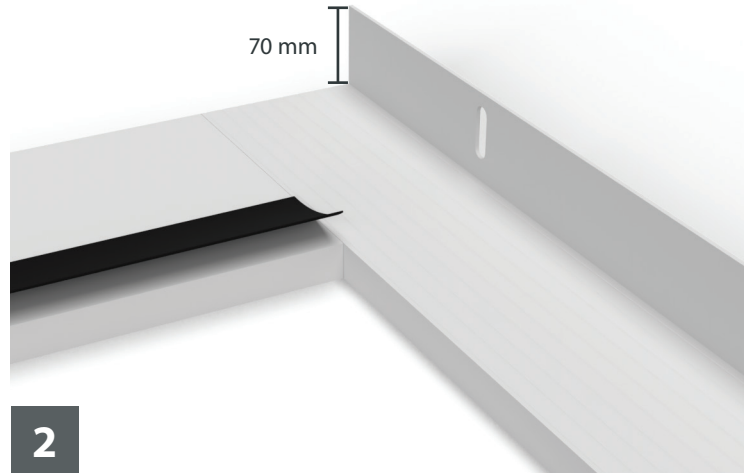
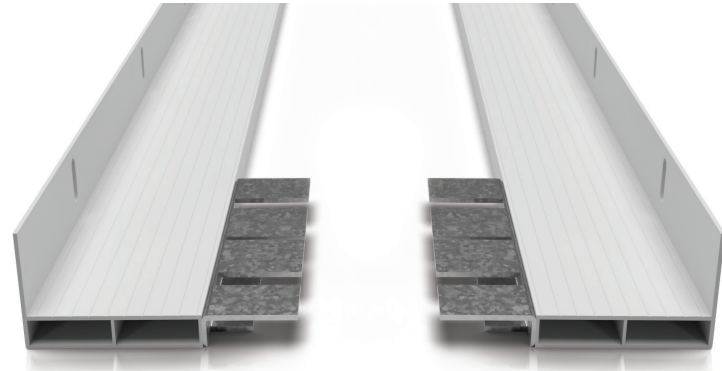


# FULL ALU FRAME

made-to-measure, on-site assembly ready



Lintel + 2 post profiles  
Lintel h=120 mm (R40 & TL LHR-RM)  
Lintel h=180 mm (TL LHR-FM)  
Posts w=100 mm  
Max opening size up to 6000 x 2500 mm



1

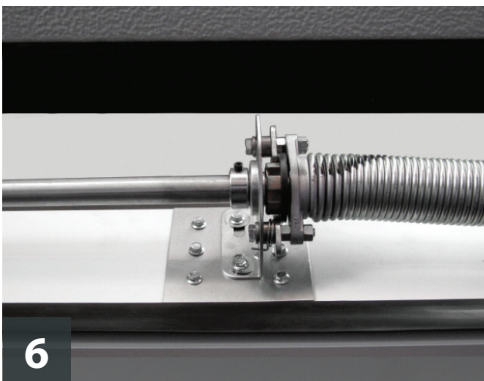
2



3



4



6

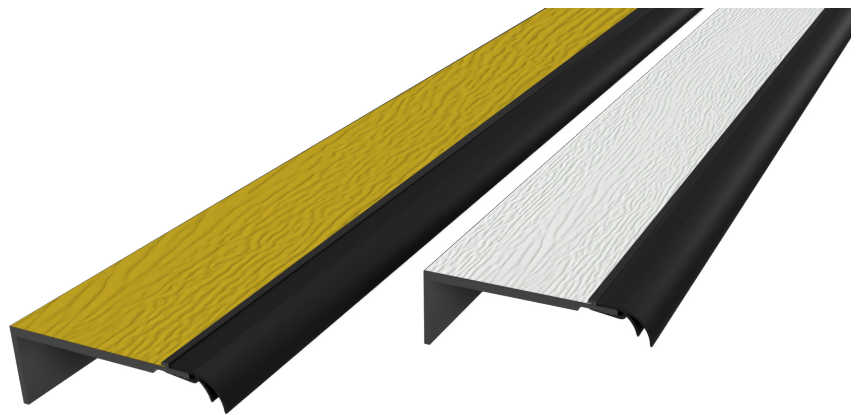
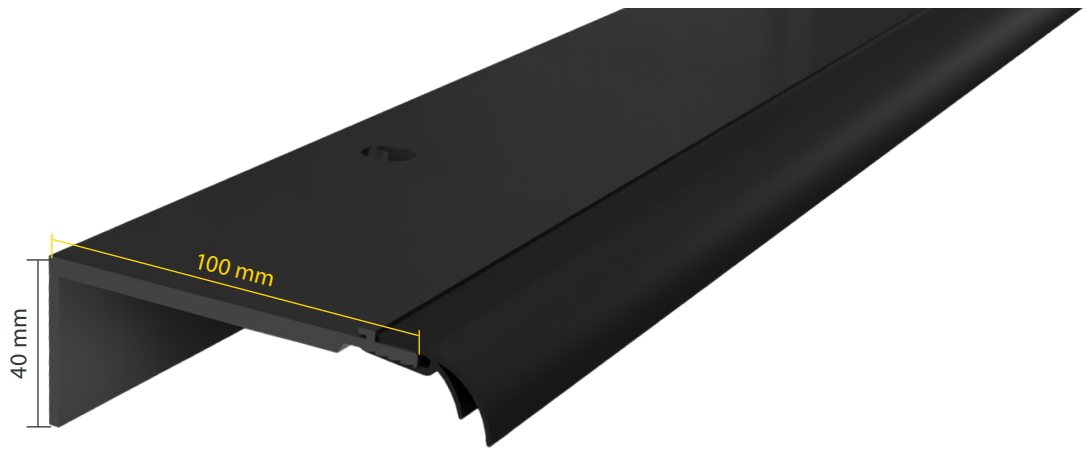


7

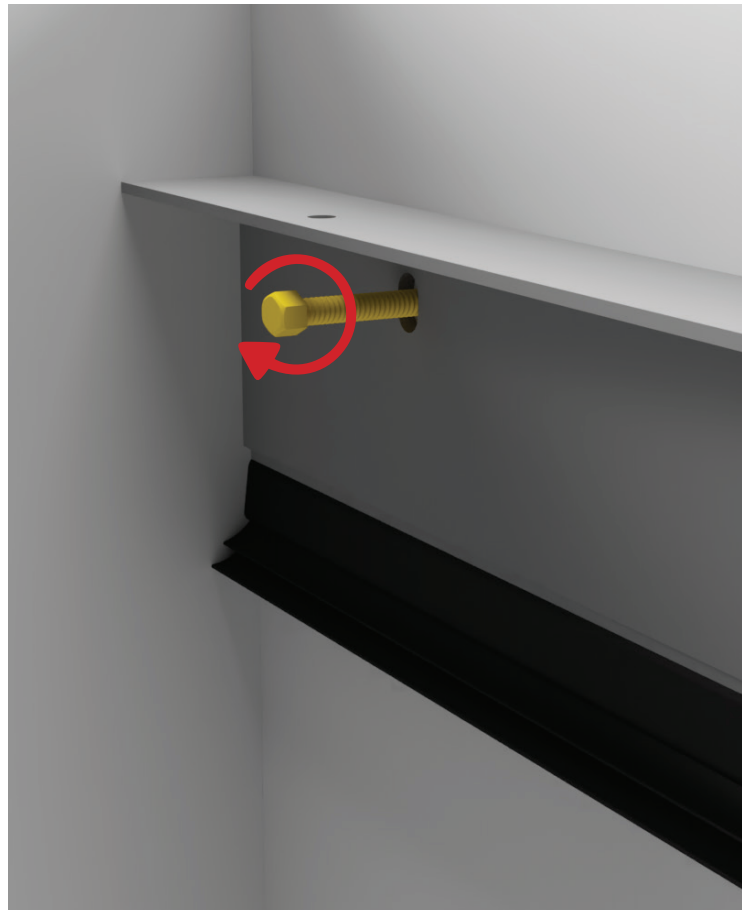
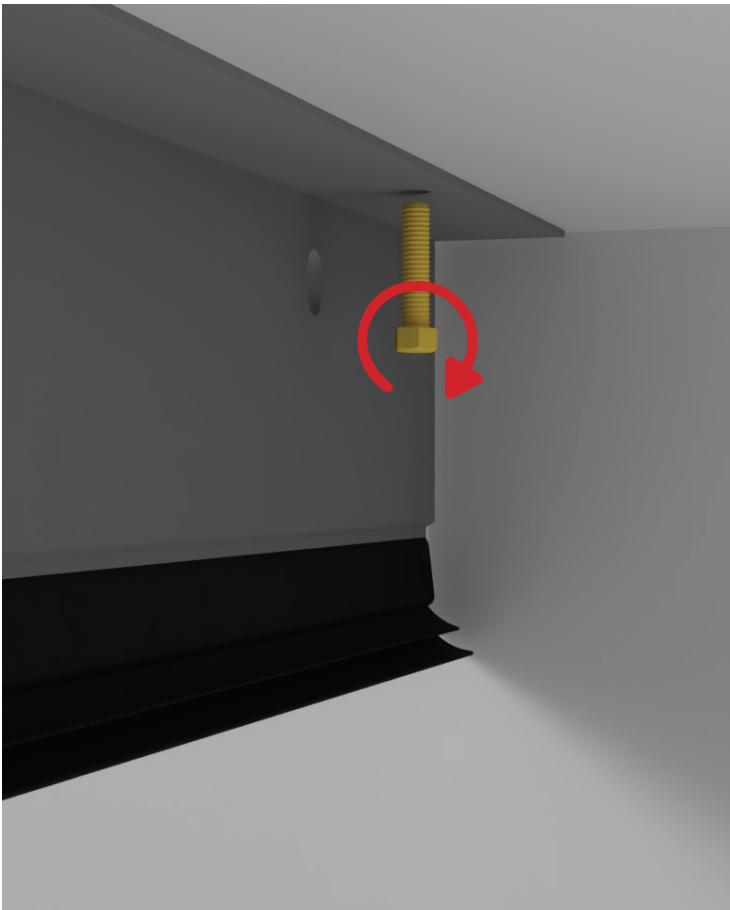


5

# PVC LINTEL PROFILE with weatherseal



Optional - with door colour tin-plate



# ALUMINIUM SIDE-ROOM & HEADROOM EXTENSION PROFILES

